

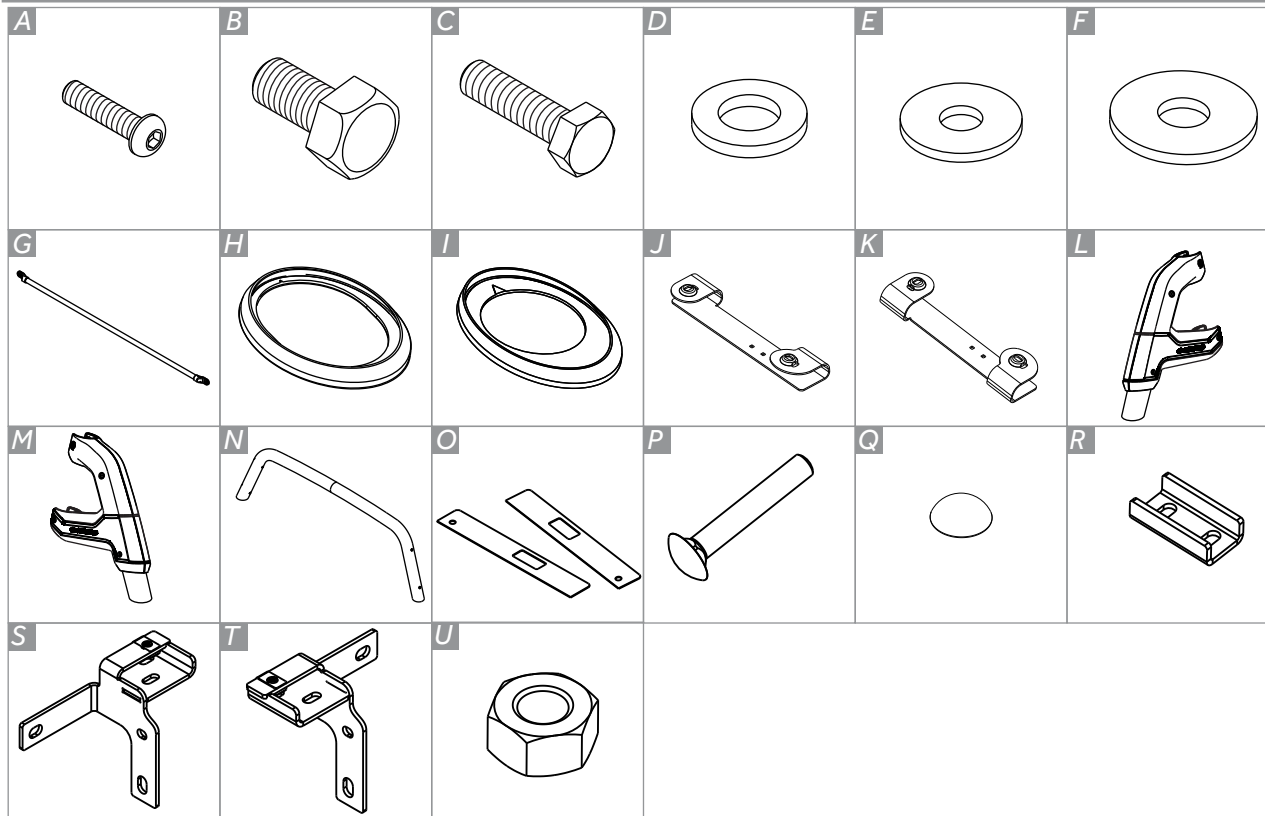


ITEM	QUANTITY	DESCRIPTION
A	02	M6x1,00x25 Int. Hex. Bulg. Head Bolt
B	04	M12x1,25x25 Hex. Bolt
C	10	M8x1,25x30 Hex. Bolt
D	04	M12x2,5x24 Flat Washer
E	02	M6x1,6x14 Flat Washer
F	10	M8x17 Flat Washer
G	01	Window Grille
H	04	Plastic Front Washer
I	02	Plastic Rear Washer
J	01	Right Bracket
K	01	Left Bracket
L	01	Right Side Cover Set
M	01	Left Side Cover Set
N	01	Front Contour
O	02	Right / Left Foam Tape
P	04	Bolt French. M8x50x1.25 RT GPR
Q	02	Plastic Screw Cover
R	02	Rear Mounting Bracket
S	01	Support right side
T	01	Left side support
U	04	Tuerca M8 X 1,25

K031PR
K031CR

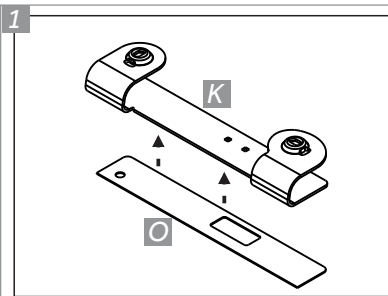
K3 Light Bar | Ranger 24

PARTS INCLUDED

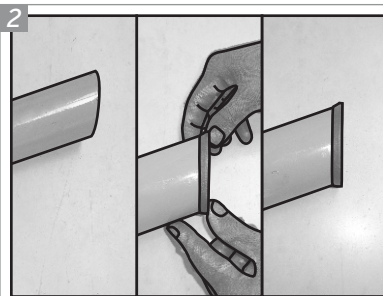


TOOLS





1 Remove liner foam strips "O", glue to "K" right base in the region of contact with the bed. Repeat the procedure for the "J" left base

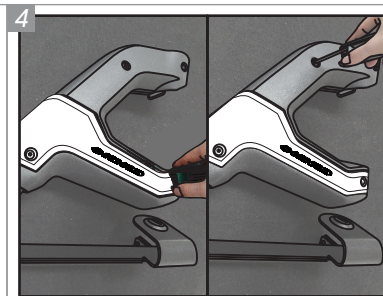


2 Position one "L" Plastic Rear Washer on the tube extremity of the "O" Right Side Cover Set. Repeat for the "P" Left Side Cover Set.

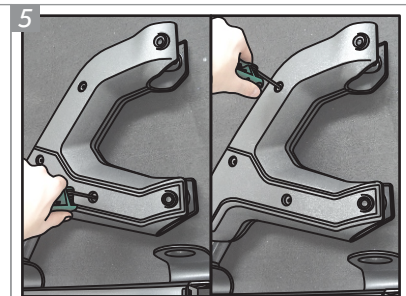


3 With the aid of a "B" Bolt and an "F" Washer, fix the "O" Right Side Cover Set to the "M" Right Bracket. Repeat the procedure for the left side. Do not give the final grip.

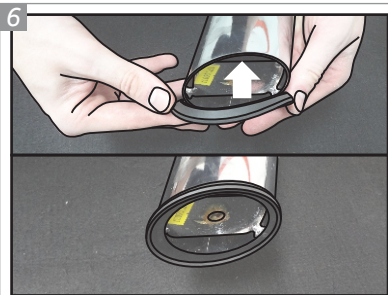
IMPORTANT: If the mounting of the Contour to the Base it's not possible, follow the aid steps. Then, return to step 4 and proceed.



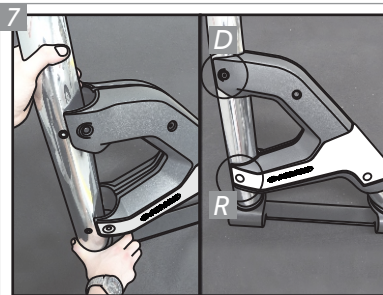
4 Separate the "O" Right Side Cover Set. Loosen the bolts that fix the outer cover. Repeat it for the "P" Left Side Cover Set.



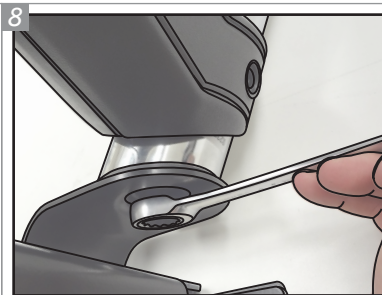
5 Loosen the bolts that fix the inner cover of the "O" and "P" Side Cover Sets.



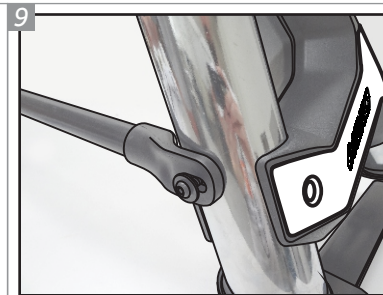
6 Position the "K" Plastic Front Washers on the extremities of the "Q" Front Contour.



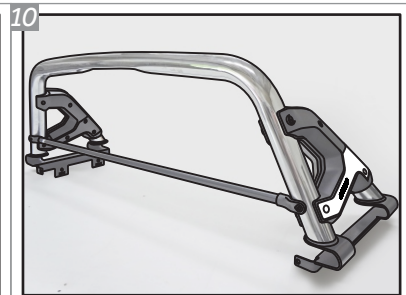
7 Fit the "Q" Front Contour on the "O" and "P" Side Cover Sets and fix them with the aid of Bolts "D" at the top and bottom, but use Bolts "R" at the bottom of the outer cover.



8 For the fixation of the Front Contour to the Side Cover Sets bases, use "B" Bolts and "F" Washers, without giving the final grip.

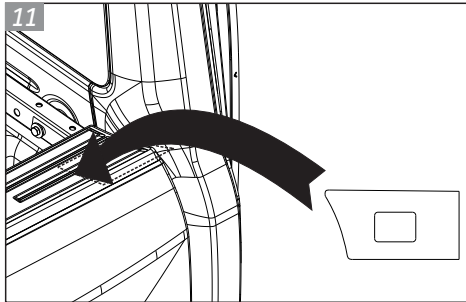


9 Position the "J" Window Grille, with the extremitys on the corresponding holes, on the Front Contour, fixing it with "A" Bolts and "G" Washers.

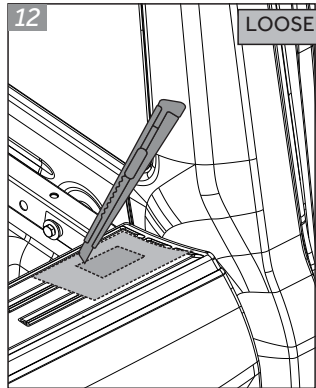


10 Your K3 Light Bar should be as in the image above. Place the accessory in the vehicle and adjust the bases on the bed and give grip to the previously loosen fixations.

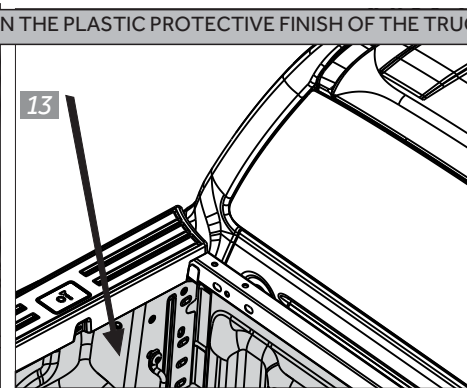
MARK AND CROP, TEMPLATE ATTACHED



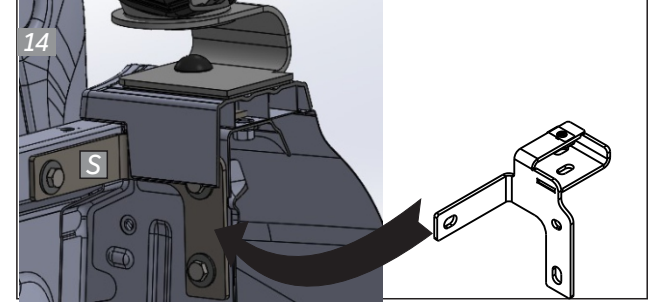
12



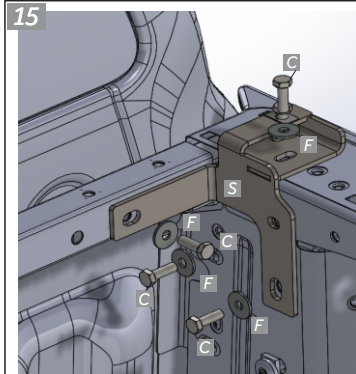
LOOSEN THE PLASTIC PROTECTIVE FINISH OF THE TRUCK



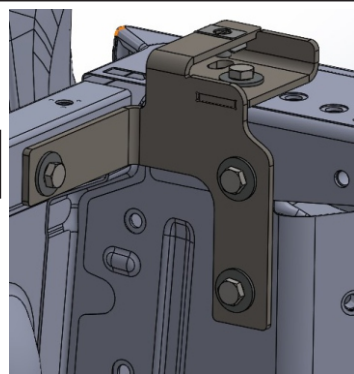
PASS METAL SUPPORT UNDER THE PLASTIC FINISH



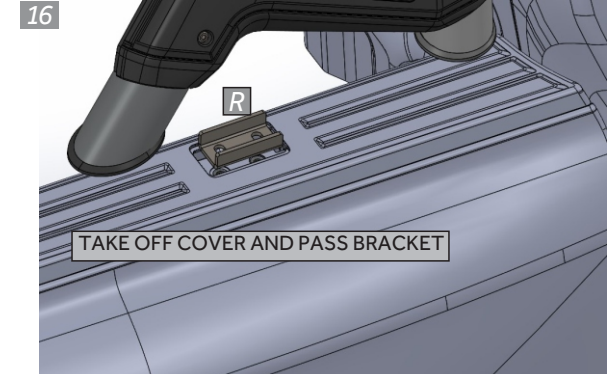
15



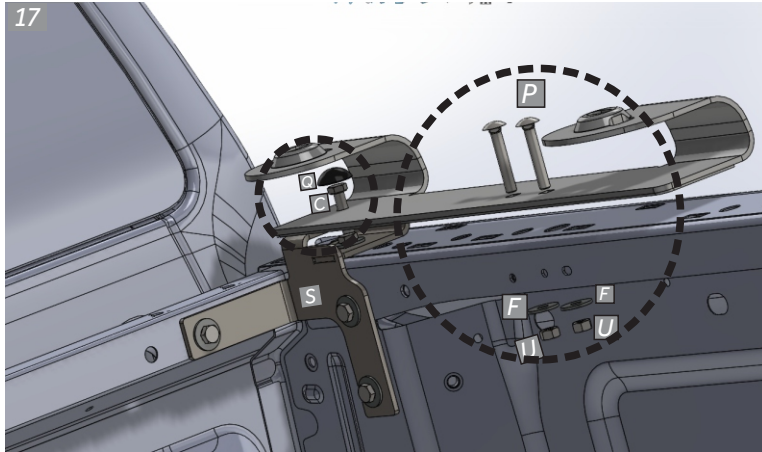
Assemble S and T support using for fixing the screws C and F washers.



16

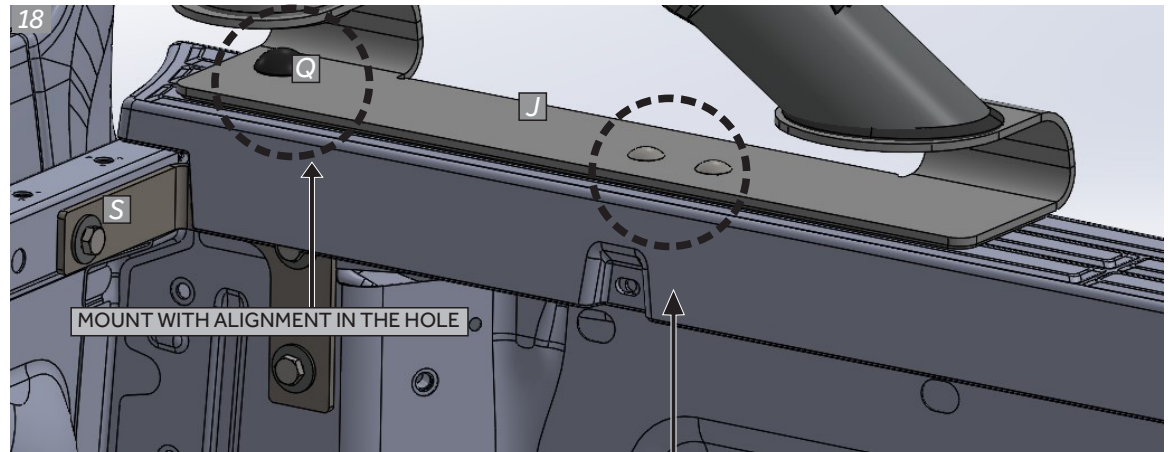


17



ASSEMBLE COMPONENTS FROM THE BOTTOM

18



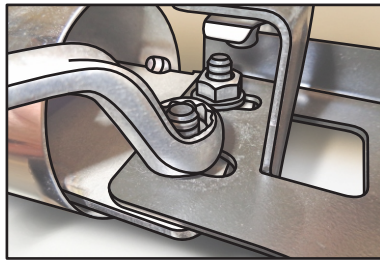
ALIGN THE BASE SO THAT THE BASE DRILLING FITS WITH THE DRILLING

1A AID STEPS



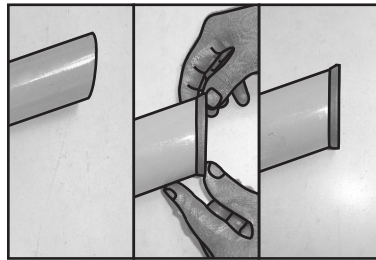
Remove the plastic covers from the "O" Right Side Cover Set.

2A



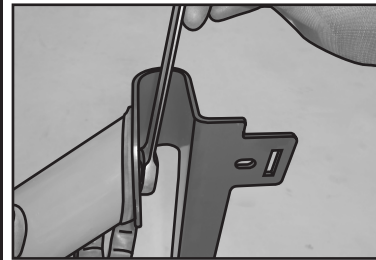
Release the two nuts, with french bolts, that hold the internal structure to the tube, so that you can adjust the tube with the "M" Right Base.

3A



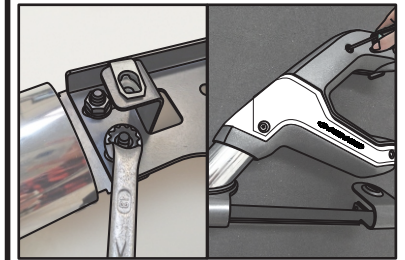
Position one "L" Plastic Rear Washer on the tube extremity of the "O" Right Side Cover Set.

4A



With the aid of a "B" Bolt and an "F" Washer, fix the "O" Right Side Cover Set to the "M" Right Base, without giving final grip.

5A



Give grip to the two nuts, previously released, on the Cover internal structure. Then, reposition the plastic covers with its bolts, without giving final grip. Repeat the steps 1A-5A for the left side.

WARRANTY CONDITIONS

Keko Acessórios S.A. warrants to the original purchaser of Keko's products, for the period of three year, from the date of the purchase, that the product is free from defects in raw material, workmanship or finishing and it is Keko's obligation, under this warranty, to repair or replace, at Keko's election, any part or parts of the product which prove to be defective. This warranty shall not apply to any product which has suffered damage from collision, mishandling, misuse, incorrect cleaning, and incorrect installation or to any product that has been altered from its original conception or had its serial number (available in the product and packaging) removed.

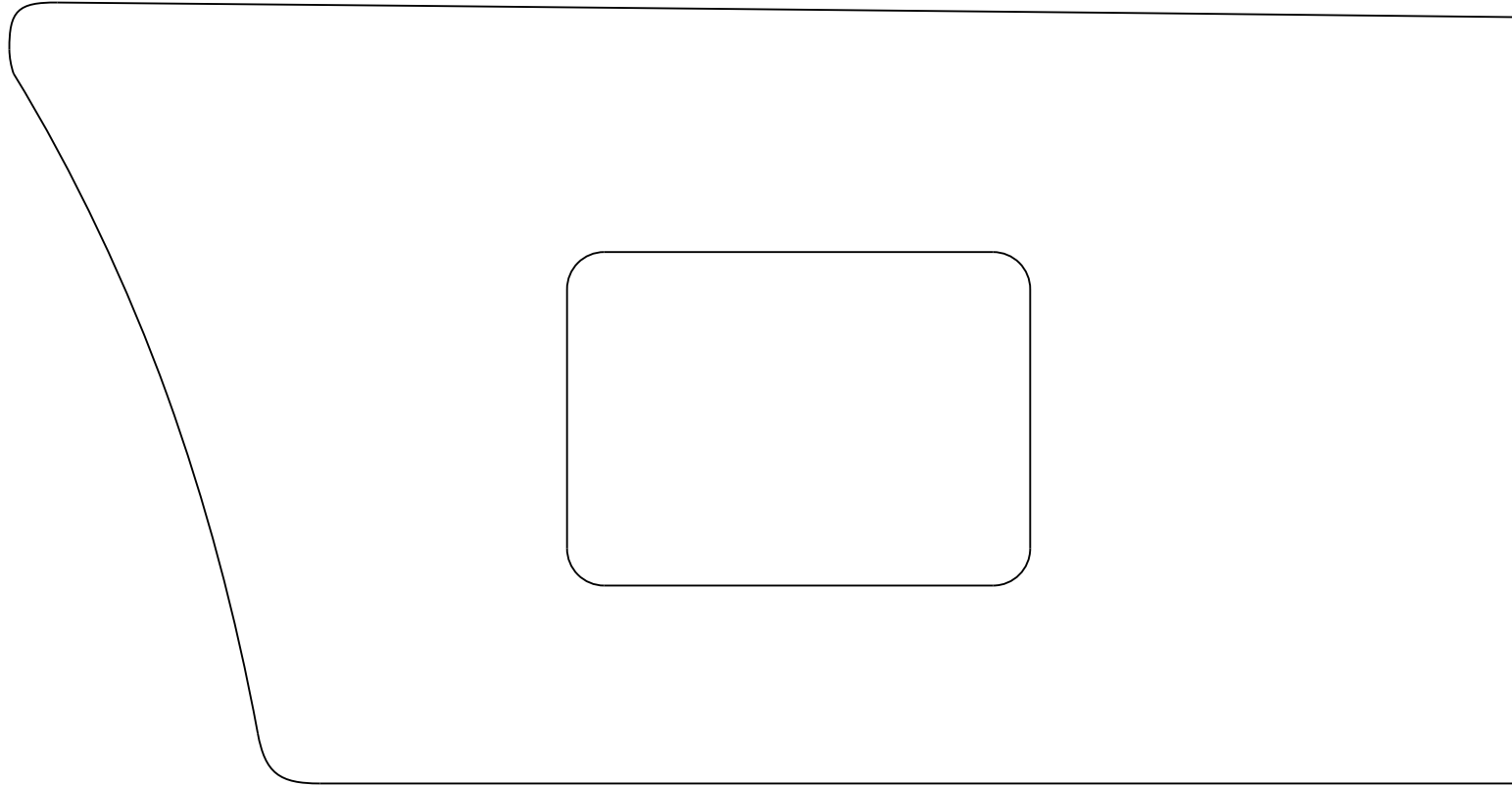
Maintenance, cleaning and durability: for cleaning use only water, neutral soap and sponge or flannel. Periodically use automotive wax to conserve the chrome-plated parts. Never use chemicals or abrasive products nott to scratch and expose the product to corrosion.

Warranty Claim: request the shop where the accessory was purchased to evaluate the defect. If proved to be Keko's liability, the part will be repaired or replaced without charge. The repair or replacement of the parts will not result in extension of the warranty term provided.

Keko's Liability Term: Keko does not assume any responsibility for the mishandling or wrong installation of its products. After using the product/packaging we recommend the appropriate destination for each type of material according applicable law.

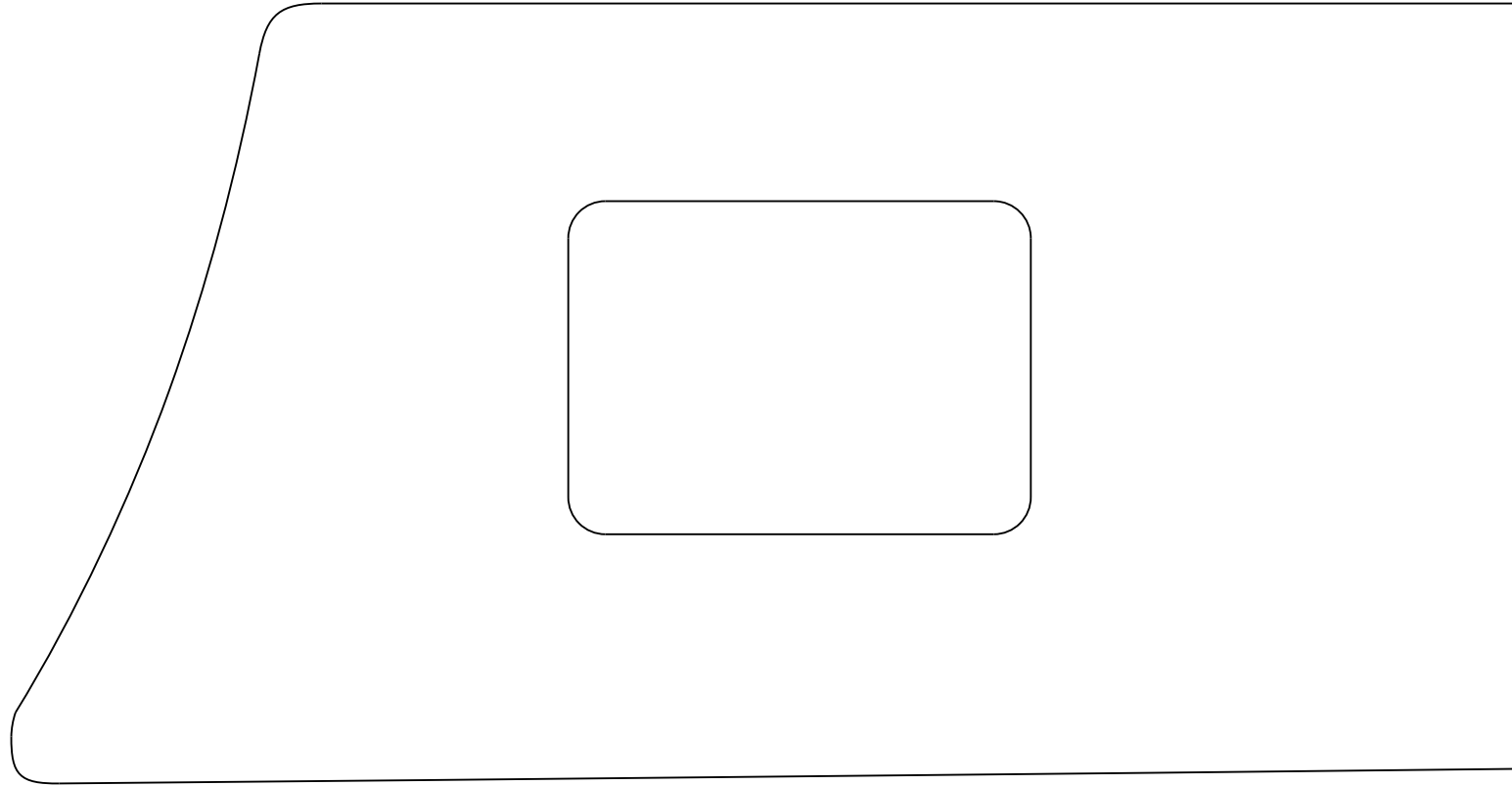
Keko's products are merely decorative and do not guarantee the safety of the occupant or vehicle in case of a rollover or other vehicle accident.

MARK AND CROP, TEMPLATE ATTACHED



INSTALLATION DESCRIPTION

MARK AND CROP, TEMPLATE ATTACHED



INSTALLATION DESCRIPTION